



LOGHOUSE.IE MAINTENANCE MANUAL

Thanks for choosing loghouse.ie as your trusted log cabin supplier.

We greatly appreciate you taking your business to us, therefore we will do our best to ensure your cabin lasts as long as possible!

Please read the manual carefully – this will help you get the knowledge you need to ensure your cabin is maintained correctly.



01 201 7675 DUBLIN | 021 243 9151 CORK

WWW.LOGHOUSE.IE [f/LOGHOUSE.IE](#) [▶](#) [📷](#) [f](#)

Taking the first steps.

Great – your logcabin is finally built.

The next steps to take will be:

- **Knot treatment**

Please ensure that's done if water based paint is used. We recommend using “Rustins” brand knotting, you can find it in any of your local DIY shops.

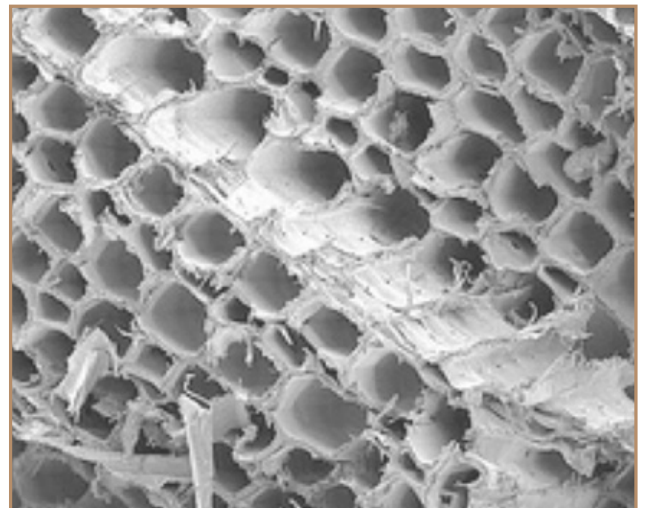
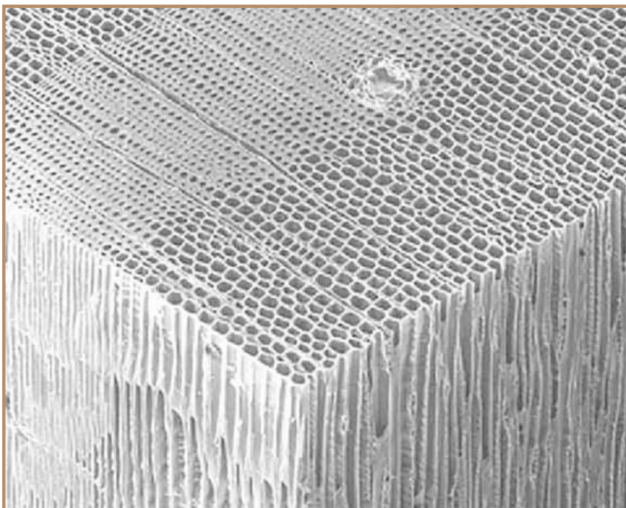
- **Using wood filler to cover screws / small cracks**

We recommend using a bit of wood filler (pine colour) to cover any imperfections or visible screws. This process is very easy, all you need is the filler itself and a bit of sand paper to ensure the surface is smooth once the filler dries out.

- **Painting your cabin**

Using good quality paint or stain and ensuring that your cabin is well covered is the most important step of the maintenance process. The texture of wood is very similar to a sponge, therefore if some areas are left untreated or not covered properly the wood will get more and more damp causing a load of issues in the long run.

See pictures attached below showing the structure of the wood.



Good result is always better than a quick result. Ensure you follow these key procedures:

- Undercoat or primer isn't necessary if good quality paint is used, but always follow the label on the paint with the instructions
- 2-3 coats of paint or stain are necessary.
- Paint must be stirred well before using it
- Do not paint in direct sunlight, especially dark colours
- Ensure the logs are clean and dry before applying paint.
- Even a small unpainted area can cause issues, try not to miss anything
- Ensure **all** areas are coated evenly, e.g. **bottom/ side. of doors and windows**
- Paint brush to be used to paint the cabin, roller won't cover all the gaps/ corners/ hard access areas.
- **! Do not use clear varnish on the outside !**

Recommended paint brands:

- Tikkurila – most recommended.
- Colourtrend
- Sikkens
- Vivacolour
- Osmo

Paint must be breathable, suitable for timber and have good protection from UV radiation. We recommend applying 2 coats every 3-4 years to ensure the cabin is kept safe and it looks great.

Further advice

Gravel/decorative stone – it is advisable to apply a level of gravel around your cabin to prevent rain/dirt water splashing up.

Gutters – in addition to the gravel advice we recommend each cabin to have gutters installed, as you will end up having horrible rain water and mud splashes on your cabin giving great opportunity for mould to grow.

Door catcher – we recommend getting a door catcher installed to avoid wind catching your door and breaking it (if left open).

Heating – start heating your cabin as soon as it's built, leaving the cabin unheated, especially over the winter time will cause dampness issues.

Ventilation – especially during periods with a high percentage of moisture the moistness inside the building will increase too, therefore air grates are highly recommended in each room.

Try to keep the inside temperature reasonably constant.

- Avoid drying clothes indoors.
- Do not dry clothes over any radiators.
- Ensure tumble driers are properly vented or the condensate is regularly emptied.
- Keep furniture away from walls.
- Do not turn off or disable extractor fans.
- Ensure extractor fans are well maintained and offer adequate airflow.
- if you drying clothes inside then Invest in “dehumidifier” (available in most home appliances stores)
- Adequate ventilation.

Also, windows has ventilation option when handle turned 45 degrees angle.

Sealing your cabin – ensure your cabin is sealed on vertical and horizontal joints, as well as around the doors and windows. Silicone needs to be reapplied once becomes loose.

Floor care – varnishing your floor is highly recommended with suitable products, alternatively laminate flooring can be used for easy maintenance, especially in the bathroom areas.



See the video of Loghouse window and door adjustment [Click here](#)

Settlement

Your cabin will settle within the first couple of years, therefore don't worry if your door or windows catches a bit – you need to get those adjusted as per builders instructions on completion. They will give you a completion checklist and explain how this can be done, you will be required to sign that you understand how to perform this procedure.

Whilst settling your timber will contract and expand – this is a very normal process, avoid any log cabin manufacturer that tells you the opposite – that is not true nor possible. Timber will normally shrink in width, not in length, therefore it might seem like the logs are separating a bit, again – don't worry, this is a normal process and all will settle back once the weather gets better.

Another mistake people make is overheating the cabin – heating it above the normal temperature will cause gaps to appear.

Please ensure you follow all of our advice and if in doubt contact us either by phone or email service@loghouse.ie to speak to our technician.

We wish you all the best with your new purchase. Loghouse.ie team